



POST EVENT

YOUR AI INVESTIGATOR

Solve More Crimes Faster with a Fraction of the Time



gorilla-technology.com

SOLVE MORE CRIME, FASTER, FOR LESS

Post Event, Your AI Investigator

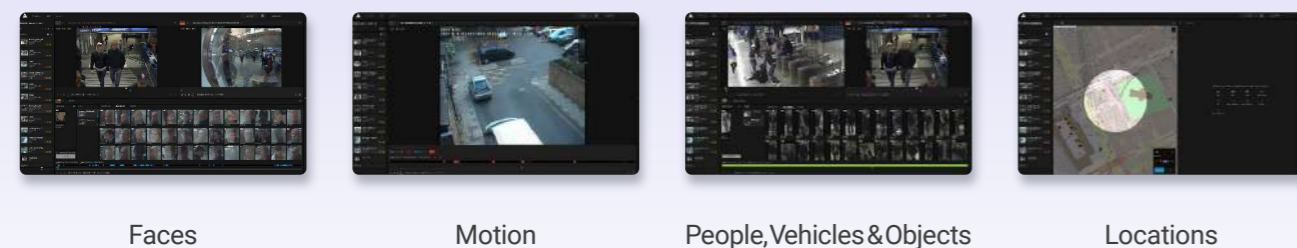
Post Event is an AI-powered end-to-end video investigations solution that requires minimal operators to solve crime faster. The solution is widely used by law enforcement and security organisations worldwide, with adoption in the US, UK, Ireland and Australia. Compared to traditional investigations that do not use video analytics, Post Event solves crimes up to 92% faster.

Post Event solves crimes ranging from homicides, assaults, and shootings globally. Our revolutionary AI reviews footage in record time to solve crimes, protect lives and assist in arrests, keeping your communities safe.

How It Works?



FIND EVIDENCE BASED ON



POST EVENT

MADE FOR LAW ENFORCEMENT



Save Police Force Time and Money

Gorilla's AI Post Event solution is used widely by law enforcement and security organisations all over the world. For our Post Event solution, we support staff and teams of analysts looking through large quantities of CCTV and other video data delivering an average time saving of 92%, when compared to traditional investigations that don't use video analytics.

CORE CAPABILITIES

Post Event offers a complete solution for intelligent video analysis for law enforcement and security.

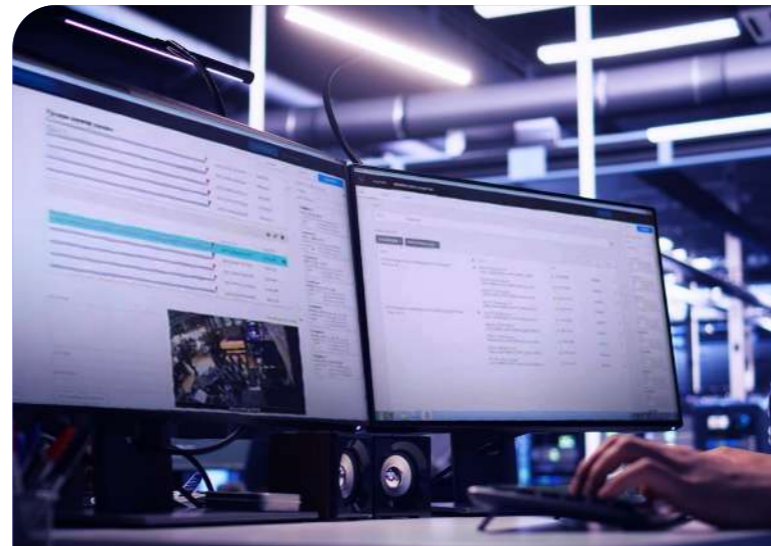
- 01** Easily import, convert and make the widest available range of video formats playable instantly.
- 02** Quickly, accurately and reliably find people of interest, objects, vehicles, specific events and much more.
- 03** Work together effectively as a team with permissions-based access.
- 04** Take on cases much quicker that may not have been viable before including cold cases.
- 05** Stand-alone supercomputers provide added security and processing speed.
- 06** Retain full evidential integrity with a fully audited system.
- 07** Automated reports save more time.

DELIVERY OPTIONS

The system can be simply deployed as a standalone solution or can easily integrate with your existing Video Evidence Management tools and other cloud-based systems to save even more time and create a seamless user experience.

1. FORMAT CONVERSION

- Automatically convert most video formats easily using our video importer.
- Send Gorilla any troublesome video files.
- We will quickly get it playing by converting it into the industry-standard MPEG4.
- Gorilla will send you the converted files over a secure network.
- All data is treated as confidential per our data privacy and data retention policies.



2. TEAM-BASED CASE MANAGEMENT SYSTEM

- Manage your entire workflow, from importing starter case material to a case or 'Quest' through to outputs for court or other investigators.
- Assign differing levels of permission within teams of video analysts and allocate responsibilities.
- Work on multiple cases simultaneously and capture statistics on Quest activities and monitor fully traceable workflows.

3. DYNAMIC MAP

- Quickly navigate through imported video material by selecting the most pertinent cameras for viewing and video analysis.
- Filters can be applied based on specific case information, such as the suspect's location and speed of travel, to determine the most relevant cameras for further investigation.
- The dynamic map orientates you within an investigation and is often the best place to begin.



4. MOTION DETECTION

- Motion detection allows you to just watch moving objects, such as people or cars.
- Save time with advanced filtering tools to enable motion detection on portions of a scene.
- Users can request to view all the motion in an area of the scene only, or conversely, they may wish to exclude certain motions.



5. PERSON DETECTION

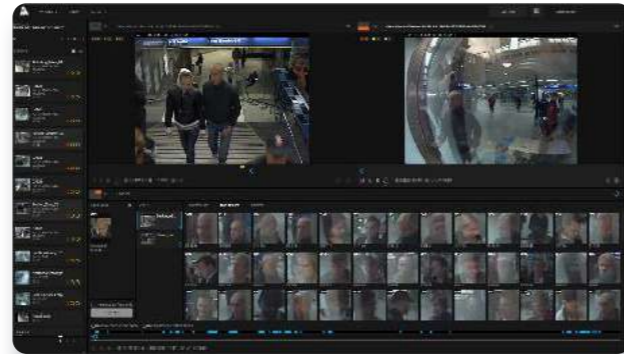
- Easily search through a gallery of all the people that appear in video data.
- Quickly identify suspects or persons of interest.



DELIVERY OPTIONS

6. FACE DETECTION & ATTRIBUTE SEARCH

- Build a gallery of all the faces from video data.
- Pinpoint where faces appear in other videos.
- Use face recognition to find a suspect, or filter faces by attributes of interest such as hair colour, glasses, etc.



7. SEARCH FOR OBJECTS

- Search for various objects in videos based on their image or description and colour.
- This includes different types of bags, guns and other weapons, vehicles, cycles and more.
- Identify and quickly search for the same object in other videos.
- Users can utilize custom rules such as: "woman, wearing red, carrying a specific type of bag hanging around in one location for more than 20 minutes."



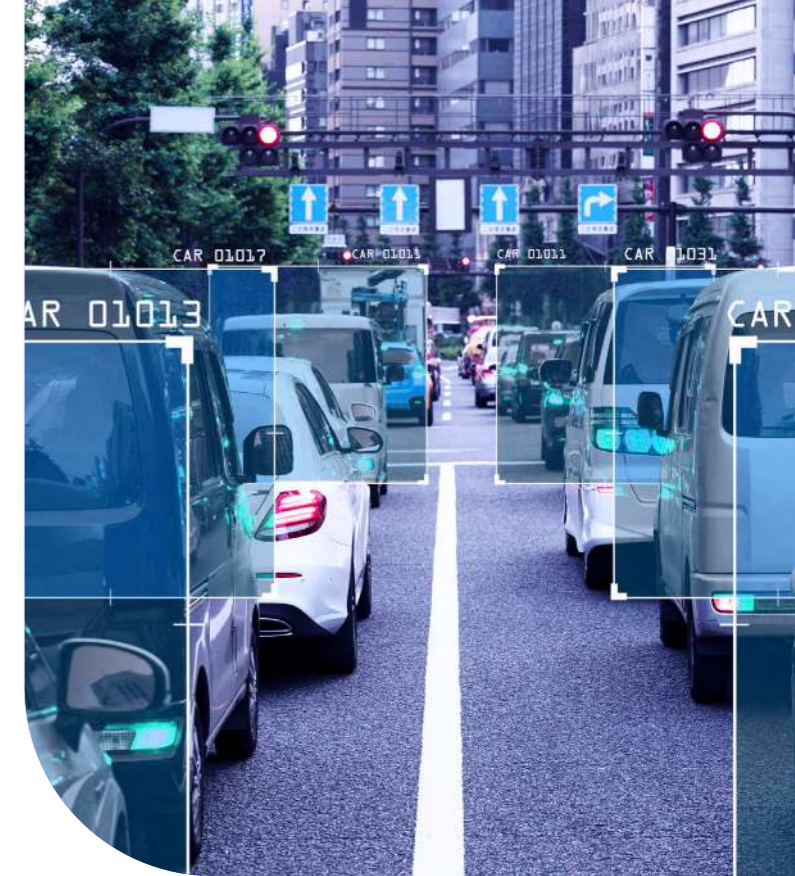
8. SEARCH BY BODY ONLY

- Search for people with their faces completely covered or obscured across multiple videos based on an image of their body or its description.
- Potentially catch people at different video segments when their face is uncovered.
- Display all the people on a canvas and jump to the time when they were captured.
- Display people as they are being captured or during specific times.
- Only show the timeline where people appear and create stills of people that have been captured.
- Re-identify a person in different cameras and import pictures and search for suspects.



9. SEARCH FOR VEHICLES

- Instantly locate cars by looking at a combination of make, model, colour, registration plate (partial or full match) and location data.
- For example, you could find a Blue Audi A4, reg plate DG1* Y**, only when it stays in location 'A' for more than 15 minutes.
- You can also find motorcycles, cycles, vans and different types of trucks of any given colour within user-defined areas and times.



10. VIDEO SEARCH

- Re-identify a person of interest across multiple cameras in multiple locations simultaneously.
- A powerful tool for those "needle in a haystack" cases when a user asks: "does this person, object, or car appear in any of this footage?"

11. VIDEO EDITING AND VIEWING TOOLS

- Fast forward video, zoom in on interesting scenes, apply light and colour filters for clearer images, add timeline markers, create stills and video clips, redact images as appropriate, and instantly share information with colleagues.
- This can be shown in system folders you create, and/or you can press a button to get an automated, customisable report created by the system.



LONDON OFFICE (HEADQUARTERS)

Meridien House, 42 Upper Berkeley Street,
Marble Arch, London, UK W1H 5QL

TAIPEI OFFICE

7F, No.302, Ruey Kuang Road,
Neihu, Taipei 114720, R.O.C

CHENNAI OFFICE

Josmans Complex, No. 8/5, 3rd Floor,
MC Nichols Road, Tamil Nadu,
Chennai-600031, India

CAIRO OFFICE

Cairo Festival City – Plot 12b03/B,
First Floor, New Cairo, Cairo Egypt

BANGKOK OFFICE

One Bangkok Tower 4, Unit 1214, 12F,
Witthayu Road, Lumpini, Pathum Wan,
Bangkok 10330

SEATTLE OFFICE

701 Fifth Ave, Suite 4200 Seattle,
Washington 98104



REQUEST A DEMO

Specifications are subject to change. Gorilla products are sold with a limited warranty.

Copyright © Gorilla Technology Group. All rights reserved.

Gorilla Technology and the Gorilla Technology logo are trademarks or registered trademarks of Gorilla Technology Group in the United States and other countries.

All other trademarks are the property of their respective owners.